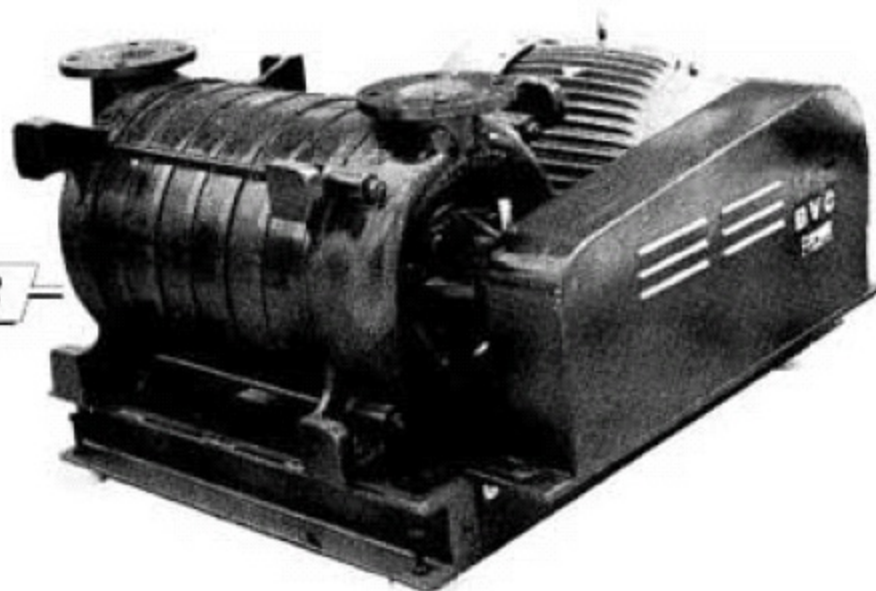


AB08



BLOWER

Impellers, Diffusers and Shaft

Steel

Intermediate rings and End covers

Aluminium

Bearings NDE –
DE –

Self aligning ball bearing
Roller Bearing

Lubrication

Grease restrictors fitted to bearing housing

Drive

Wedge Belt (Multi rope) with taper lock bushes

Bearing Housing

Outboard from end cover (for cooler running)

No of stages

8

Nominal port size

76mm with flange drilled 3" BS Table D

Inlet and Outlet port

Vertical as standard but can be fitted at 90° clock and anti-clock

Motor

Induction 2 pole TEFV to IP 55 3 phase 50 cycles (60 cycle available on request) 415/3/50 (other voltages available on request). Suitable for Star/Delta

Control Switch and cable

Not supplied (but available on request). Suitable overload protection and fuse protection must be provided

Mounting

Motor and exhauster blower supplied mounted on bed plate complete with belt guard and anti-vibration mounts.

Dimensions – Height

990 mm (including filter and throttle valve)

**Length
Width**

990 mm
953 mm

**Weight – Motor Unit
Bare Shaft**

310Kg
90Kg

EXHAUSTER APPLICATIONS

Inlet

should be fitted with flexible connector to in-line filter

Outlet

Diffuser or filter to act as silencing muffler

BLOWING APPLICATIONS

Inlet

should be fitted with in-line filter

Nominal Speed

starting

AB08/45 – 4500rpm 5.5Kw

AB08/49 – 4900rpm 7.5Kw

AB08/57 – 5700rpm } 11Kw

AB08/59 – 5900rpm }

AB08/60 – 5900rpm } 15Kw

AB08/62 – 6200rpm }

Outlet

Exhauster/Blowers can be supplied without motor, and belt drive (Bare Shaft).

filter (and throttle valve if required)

should be fitted with flexible connector to pipework



PERFORMANCE TABLE

VACUUM OR PRESSURE		PSI	0.28	0.57	0.85	1.13	1.42	1.70	2.0	2.27	2.55	2.84	3.12	3.40	3.69	4.0	4.28	4.54	4.82	5.1	5.39	5.68	6.0	6.24	6.53		
		"WG	7.9	15.7	23.6	31.5	39.4	47.2	55.1	63.0	70.9	78.7	86.6	94.5	102.4	110.2	118.1	126.0	133.8	141.7	149.6	157.5	165.3	173.2	181.1		
		mmWG	200	400	600	800	1000	1200	1400	1600	1800	2000	2200	2400	2600	2800	3000	3200	3400	3600	3800	4000	4200	4400	4600		
AIR FLOW																											
EXHAUSTERS	AB08/45	M ³ /Hr	882	845	795	735	680	615	540	455	335	140															
		CFM	525	497	468	432	400	362	318	268	197	82															
	AB08/49	M ³ /Hr	970	925	880	830	785	730	675	610	530	430	300	77													
		CFM	570	544	518	488	462	429	397	359	312	253	175	45													
	AB08/59	M ³ /Hr	1159	1127	1088	1049	1011	964	913	853	790	731	629	527	453	382	238										
		CFM	682	663	640	617	595	567	537	502	465	430	370	310	200	225	140										
	AB08/62	M ³ /Hr	1250	1210	1172	1137	1090	1052	1010	970	925	880	830	770	697	612	510	374	335	90							
		CFM	735	712	689	669	641	619	594	570	544	518	488	463	410	360	300	220	197	53							
BLOWERS	AB08/45	M ³ /Hr	895	855	805	755	705	645	590	535	459	374	270	150													
		CFM	526	503	473	444	415	379	347	315	270	220	159	88													
	AB08/49	M ³ /Hr	975	940	900	860	810	765	710	655	600	540	480	420	340	255	135										
		CFM	573	553	529	505	476	450	418	385	353	318	282	247	200	150	79										
	AB08/57	M ³ /Hr	1120	1080	1040	1000	960	920	875	830	785	735	680	640	590	530	470	410	289	250	150	40					
		CFM	659	635	612	588	565	541	515	488	462	432	406	376	347	312	276	241	170	147	88	23					
	AB08/60	M ³ /Hr	1300	1270	1230	1190	1155	1115	1080	1040	1005	965	925	885	840	790	750	707	612	595	530	485	390	300	160		
		CFM	765	747	723	700	679	656	635	612	591	568	544	521	494	465	441	416	360	350	312	273	229	176	94		
Multiply CFM x 0.4719 for Litres/sec														Divide "WG by 13.6 for "Hg													

